

PERFORMANCE[®] POOL PRODUCTS

2020 Vinyl Inground Liners

INTRODUCING

LINERVISUALIZER

lathamlinervisualizer.com

Choosing the perfect liner just got much easier!



Grey Mosaic Full Floor Vinyl Liner

latham

PerformancePoolProducts.com

Introducing The Latham Liner Visualizer

www.lathamlinervisualizer.com

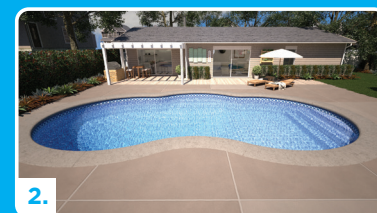
Now from anywhere, on any device, you can experience the fun and convenience of designing your perfect pool—right down to the hue of the water.

Set in your choice of backyards and home styles, and having the capability of changing your viewing angles, **The Latham Liner Visualizer** makes the pool liner purchase decision easier and faster.

1. SELECT YOUR YARD STYLE

2. SELECT YOUR POOL SHAPE

3. SELECT YOUR LINER



#SwimLatham
f t y p

latham

Fun Meets Durability and Designer Style

PERFORMANCE[®] POOL PRODUCTS

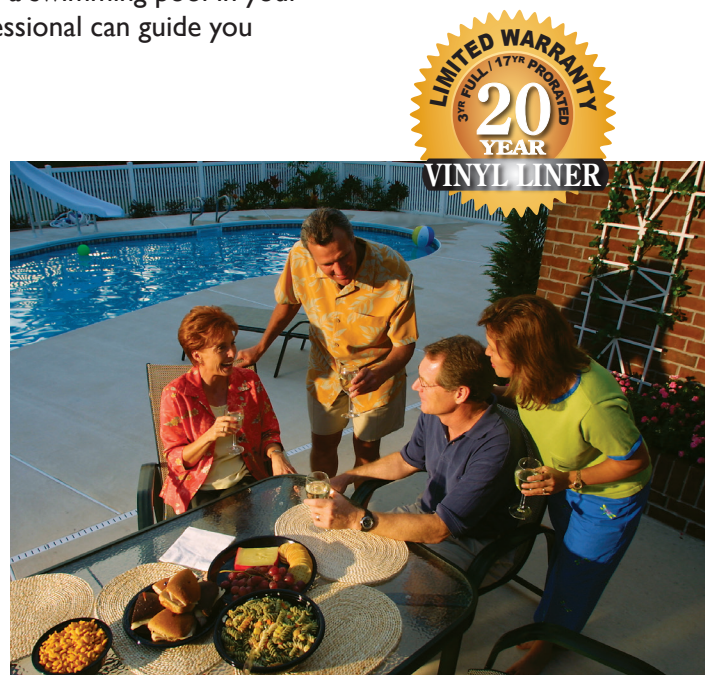
After a long, brutal winter, you're ready for a change of pace. But now that the weather has turned to sunny and HOT, you're longing for a swimming pool in your backyard. Fortunately, a Performance Pool Products professional can guide you every step of the way.

When building, or updating an inground pool, one of the most important decisions you will have to make is choosing the best vinyl liner for your pool. Performance Vinyl Liners offer a large selection of designer patterns, which are made of the highest quality vinyl materials.

In addition, your Performance vinyl liner is backed by a 20-Year Warranty, one of the best in the business.

All Performance Vinyl Liners feature our exclusive Ultra-Seam[®] technology. Combined with the added benefit of bacteria and chemical resistant vinyl material, you'll experience carefree enjoyment for many years to come. For a long lasting vinyl liner, and ease in cleaning and maintenance, choose Performance.

For more information, contact your Performance Pool Products dealer...and get your pool fun on!



Ultra-Seam[®] – Standard on every Performance liner!

Featuring

ULTRA-SEAM[®]
Patent Pending

Liner Technology

The strongest seams you'll never see! Over 500,000 installs!



Standard pool liners present visible lines on the pool floor at the seams which ultimately detract from the beauty of the pool. Our innovative Ultra-Seam[®] technology elevates our liners to an entirely new category.

This exclusive process makes floor seams stronger and virtually invisible, so there's nothing that gets in the way of the picture perfect beauty of your pool!

Now standard on every Performance Liner.

For more information, ask your dealer about Ultra-Seam!

2020 Vinyl Liner Pattern Selections

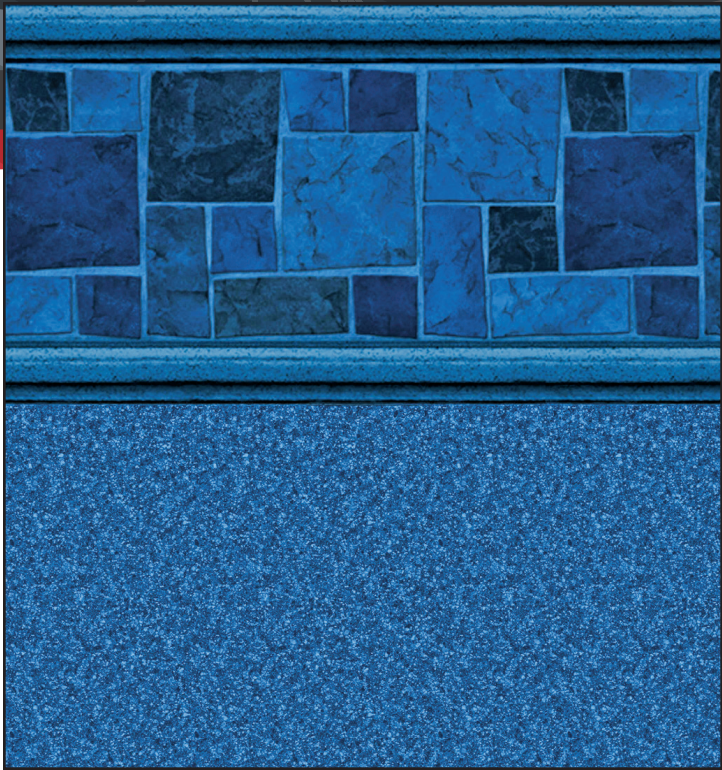
PERFORMANCE[®]
POOL PRODUCTS



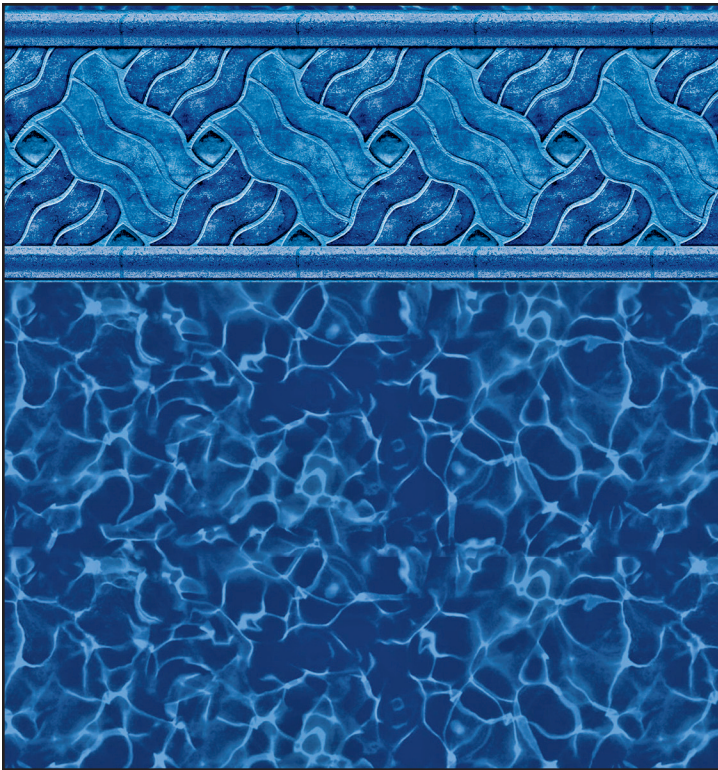
CAPRI / FRESCO II
27 MIL | LIGHT



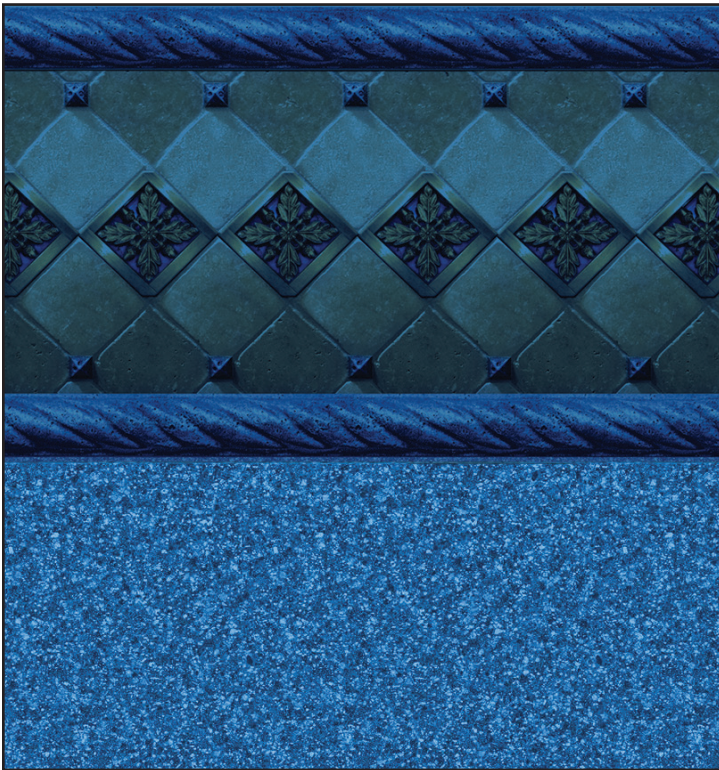
COURTSTONE / NATURAL GREY
27 MIL | LIGHT



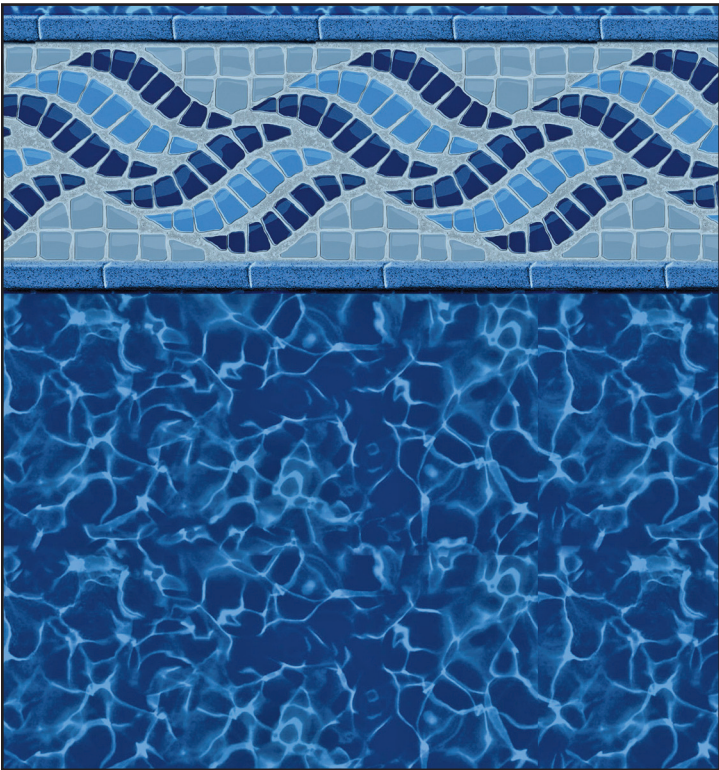
COURTSTONE BLUE / NATURAL BLUE
27 MIL | DARK



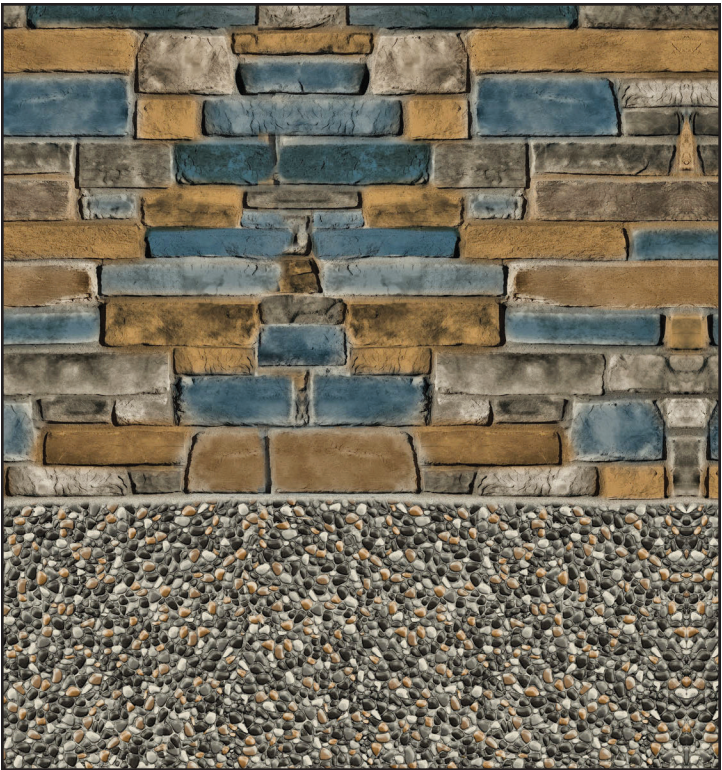
LEGENDS / DEEP BLUE FUSION
27 MIL | DARK



OCEAN BAROLO / NATURAL BLUE
27 MIL | DARK



SUMMERWAVE / DEEP BLUE FUSION
27 MIL | DARK



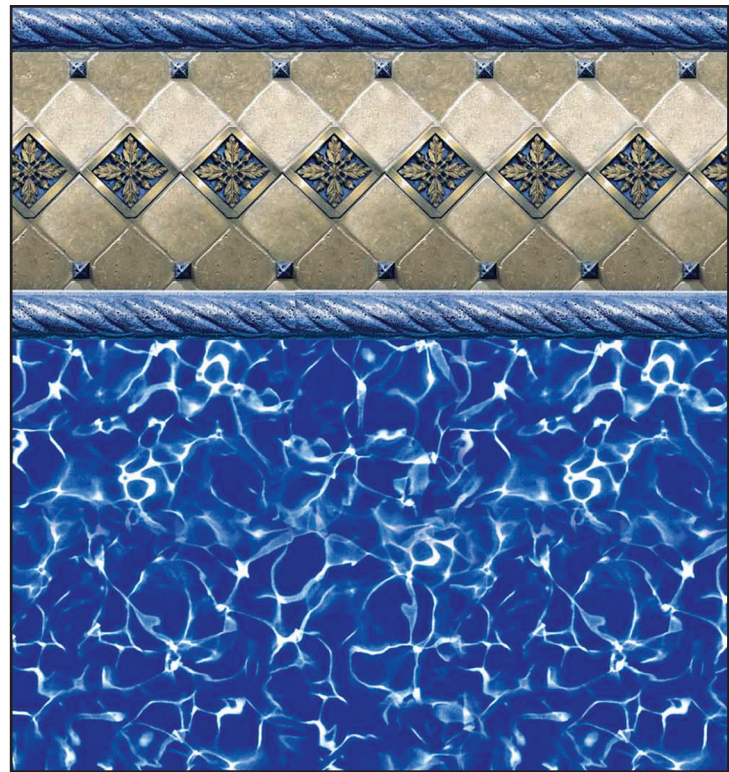
TAN SIERRA / GOLD PEBBLE
27 MIL | LIGHT



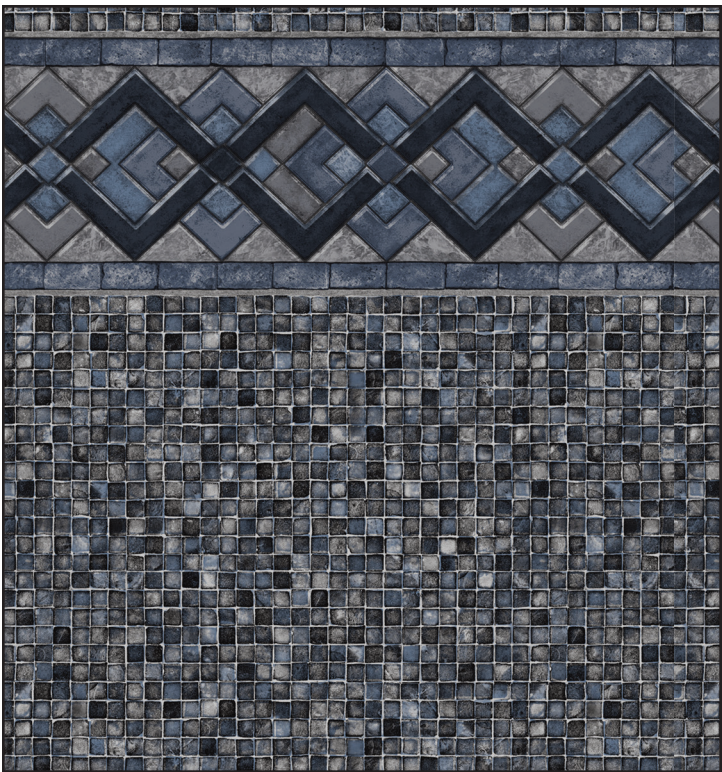
COBALT WITH GREY MOSAIC



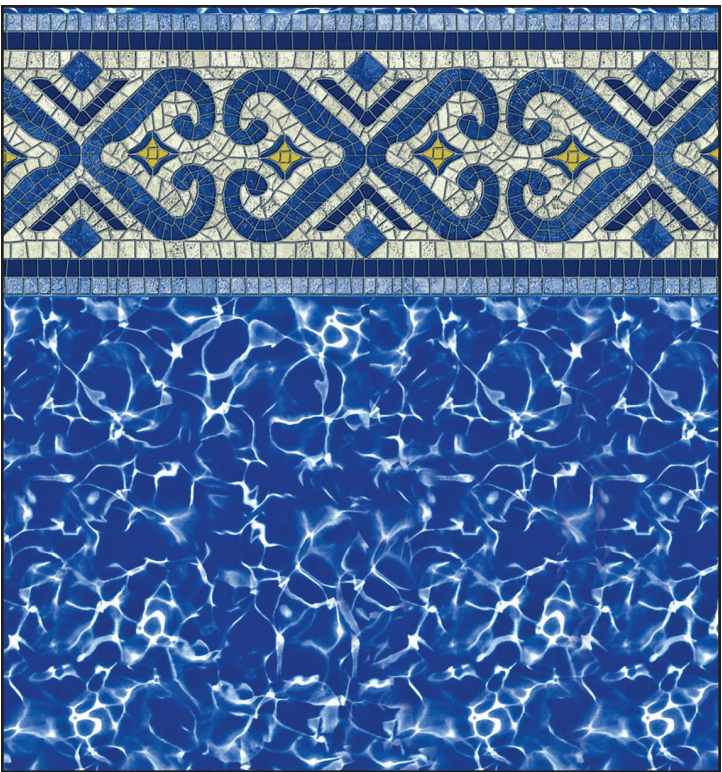
COVENTRY WITH PRISM



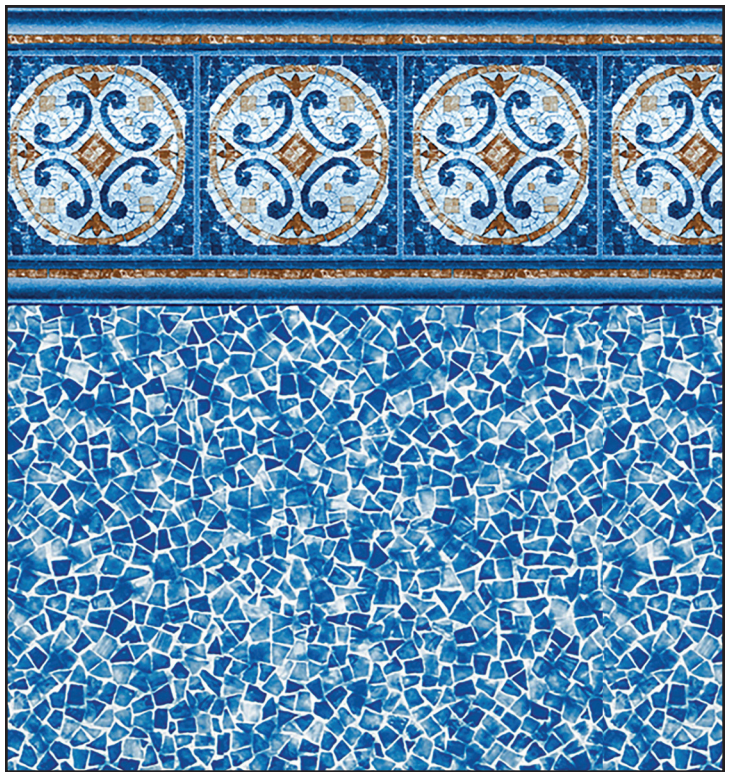
BAROLO / PRISM
20 & 27 MIL | DARK



COBALT LAKE / GREY MOSAIC
20 & 27 MIL | LIGHT



COVENTRY / PRISM
20 & 27 MIL | DARK



HAMPTON / SEAGLASS
20 & 27 MIL | MEDIUM



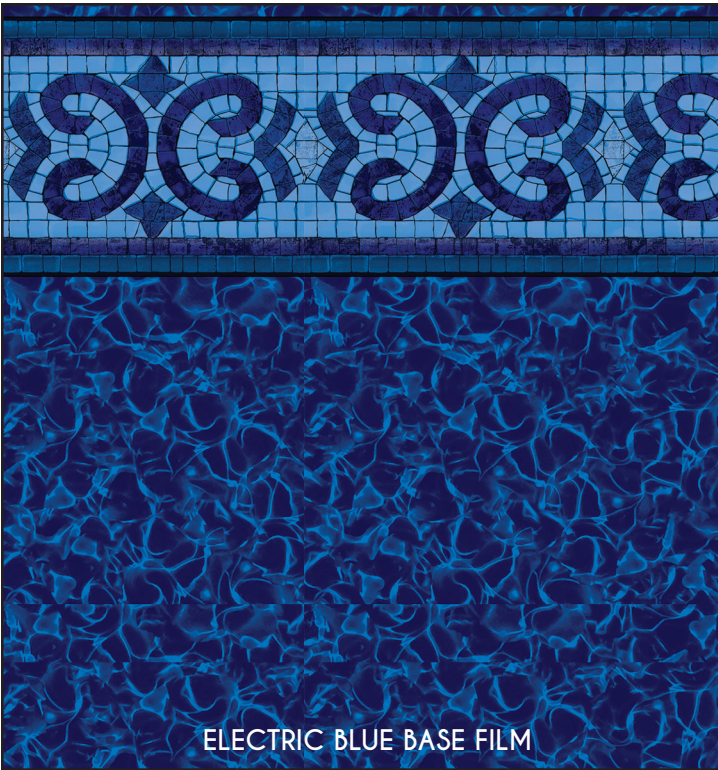
MOUNTAIN TOP WITH BLUE MOSAIC



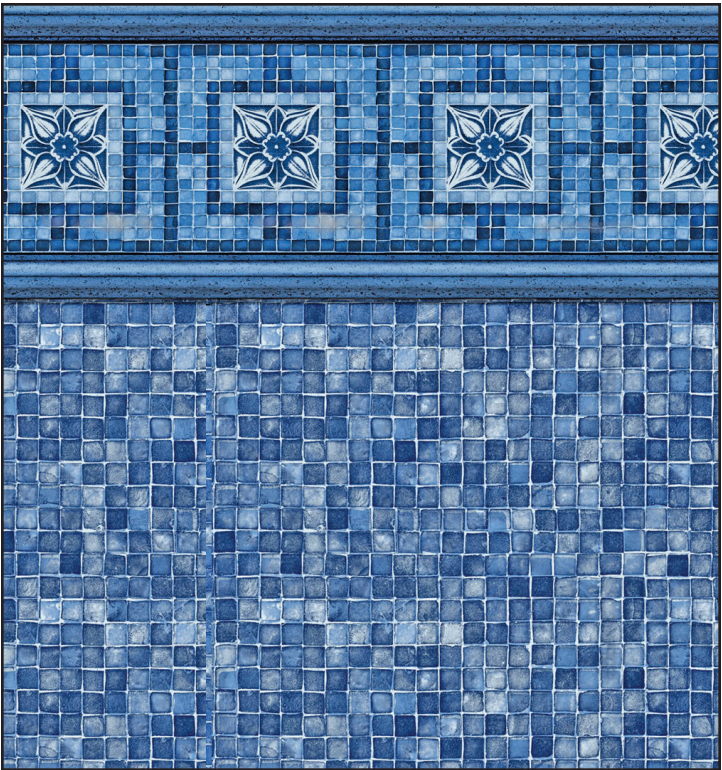
VINTAGE MOSAIC WITH BLUE MOSAIC



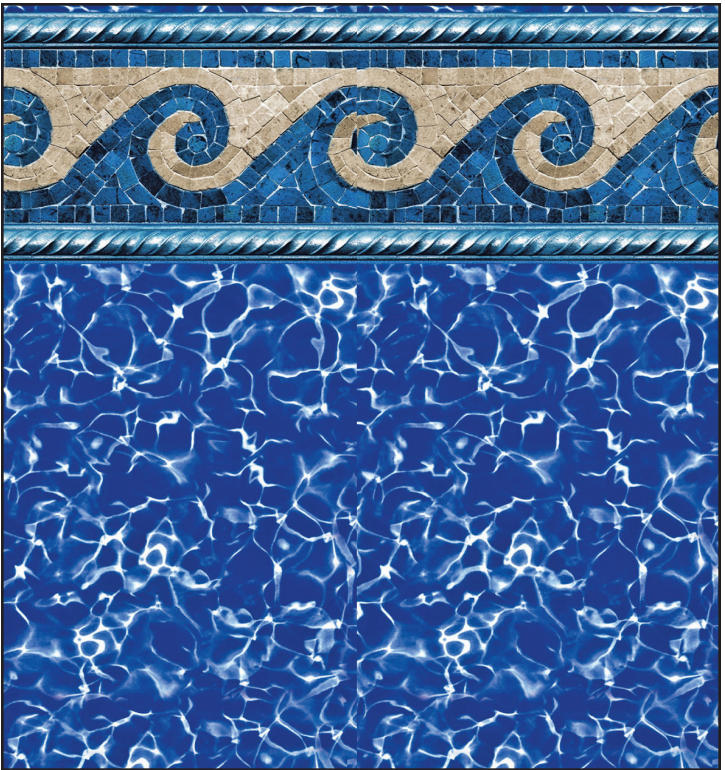
MOUNTAIN TOP / BLUE MOSAIC
20 & 27 MIL | MEDIUM



OXFORD / ELECTRIC AQUARIUS
20 & 27 MIL | DARK



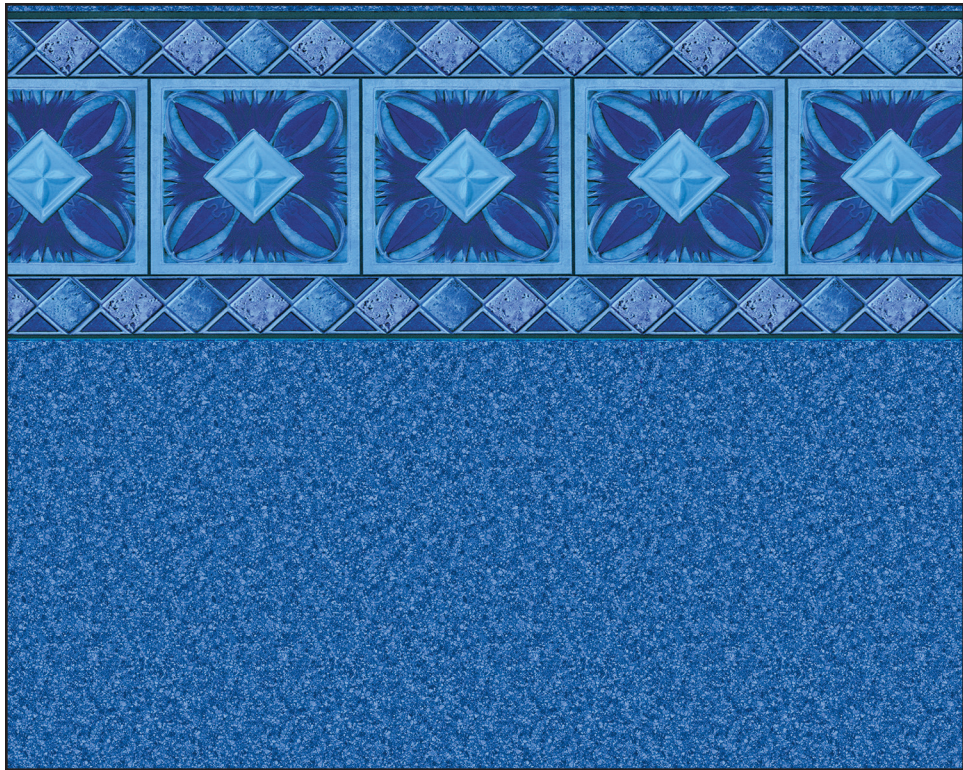
VINTAGE MOSAIC / BLUE MOSAIC
20 & 27 MIL | MEDIUM



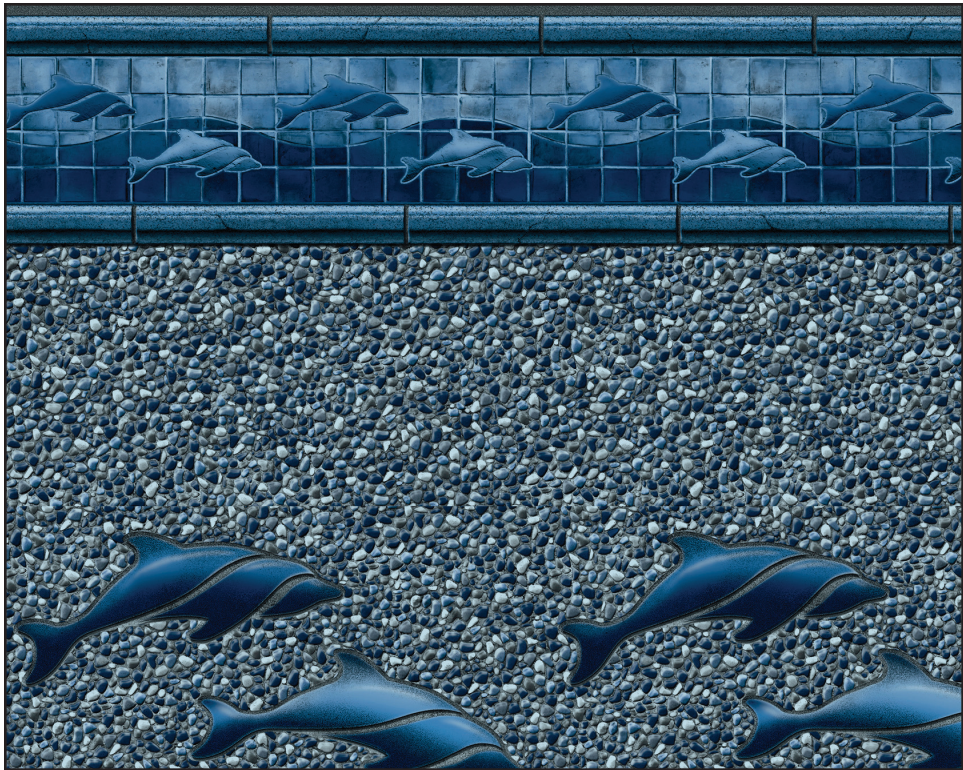
PACIFIC TIDE / PRISM
20 & 27 MIL | DARK



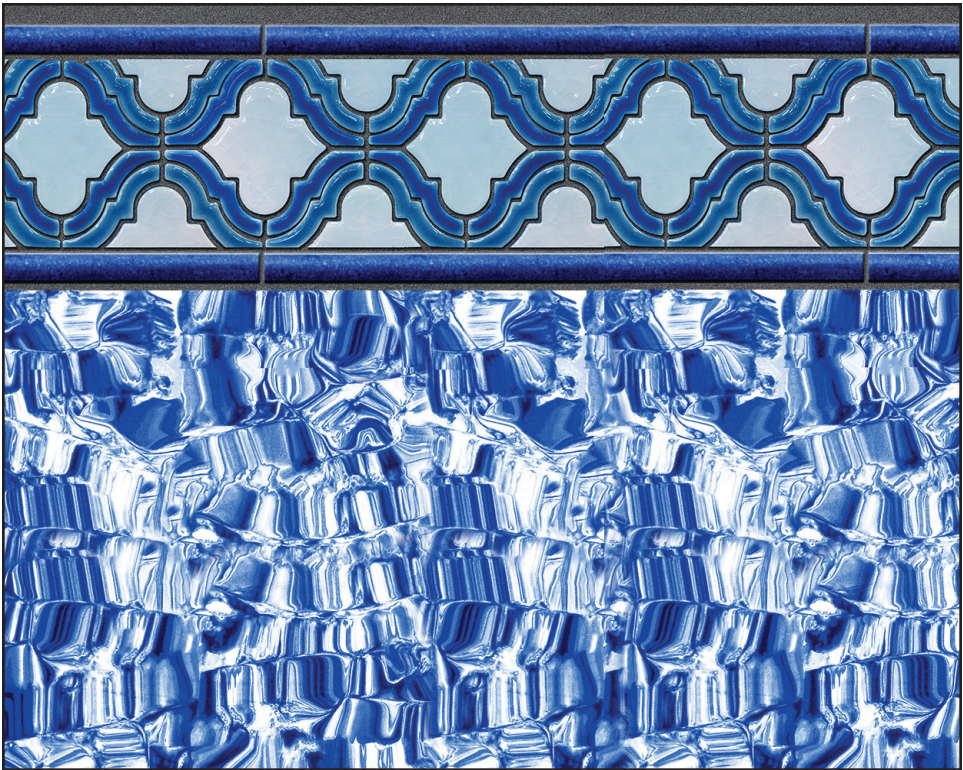
CANCUN WITH BLUE GRANITE



CANCUN / BLUE GRANITE
20 MIL | DARK

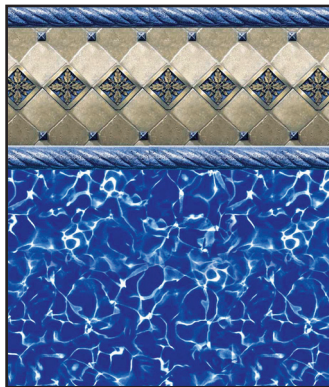


DOLPHIN / ROYAL SEABROOK
20 MIL | MEDIUM

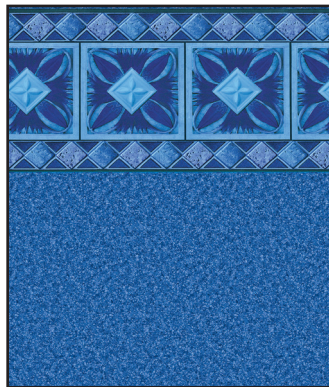


SEASIDE / GLACIER
20 MIL | MEDIUM

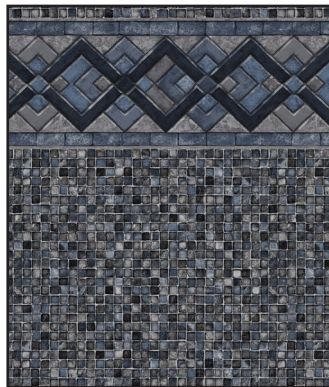
20 MIL TILE LINER SELECTIONS



BAROLO / PRISM
20 MIL — DARK



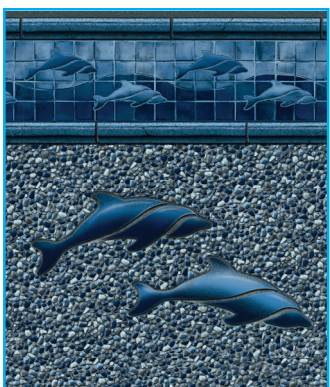
CANCUN / BLUE GRANITE
20 MIL — DARK



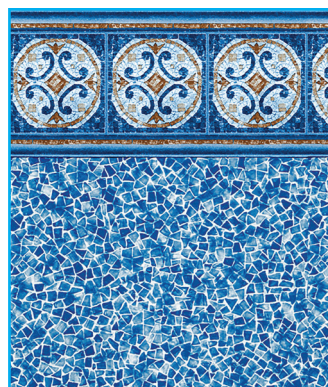
COBALT LAKE / GREY MOSAIC
20 MIL — LIGHT



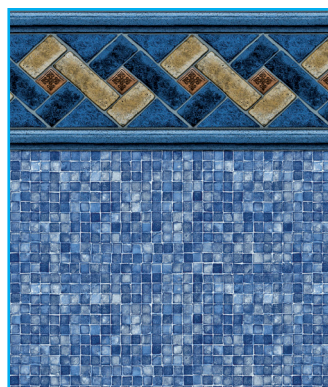
COVENTRY / PRISM
20 MIL — DARK



DOLPHIN / ROYAL SEABROOK*
20 MIL — MEDIUM



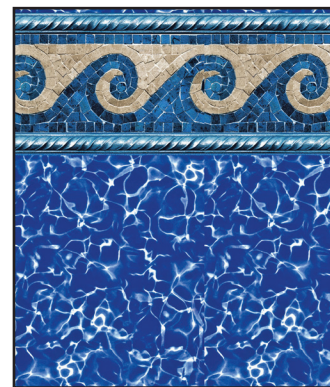
HAMPTON / SEAGLASS
20 MIL — MEDIUM



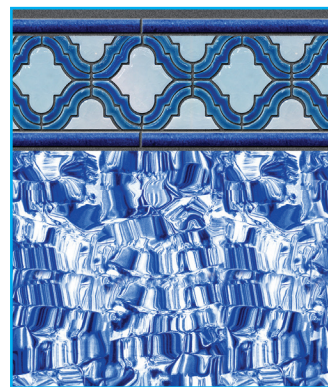
MOUNTAIN TOP / BLUE MOSAIC
20 MIL — MEDIUM



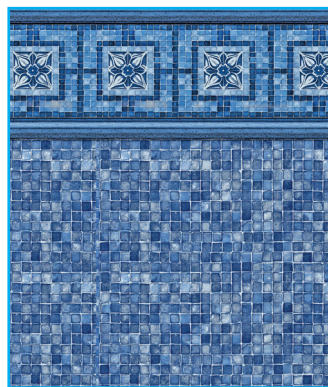
OXFORD / ELECTRIC AQUARIUS
20 MIL — DARK



PACIFIC TIDE / PRISM
20 MIL — DARK



SEASIDE / GLACIER
20 MIL — MEDIUM



VINTAGE MOSAIC / BLUE MOSAIC
20 MIL — MEDIUM

DUOMAX & SUPERMAX MIL TILE LINER SELECTIONS



BALI / BLUE GRANITE
27/20 MIL — DARK



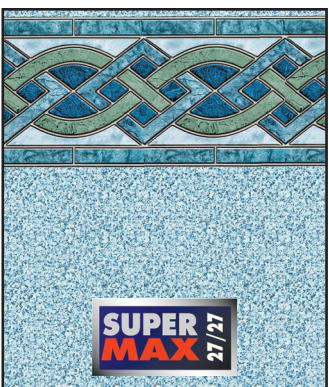
INDIGO MARBLE / BLUE GRANITE
27/20 MIL — DARK



GULF COAST / TAN SEASTONE
27/27 MIL — LIGHT



NANTUCKET / BLUE SEASTONE
27/27 MIL — MEDIUM



MARBLE INLAY / CRYSTAL
27/27 MIL — LIGHT



MOONSTRUCK / CREEKSTONE
27/27 MIL — MEDIUM



PANAMA / ROYAL PRISM
27/27 MIL — MEDIUM

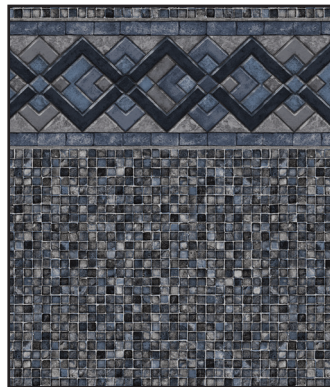


STONEBRAID / ROYAL PRISM
27/27 MIL — MEDIUM

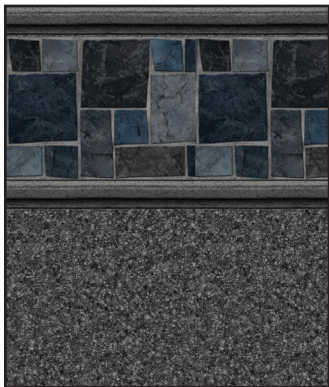
27 MIL TILE LINER SELECTIONS



CAPRI / FRESCO II
27 MIL — LIGHT



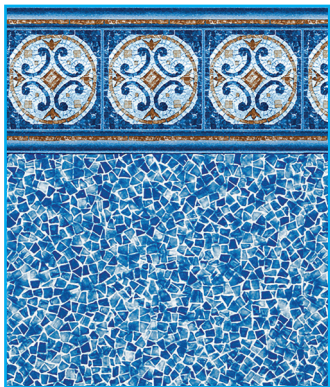
COBALT LAKE / GREY MOSAIC
27 MIL — LIGHT



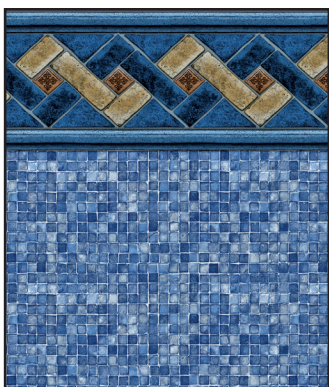
COURTSTONE / NATURAL GREY
27 MIL — LIGHT



TAN SIERRA / GOLD PEBBLE
27 MIL — LIGHT



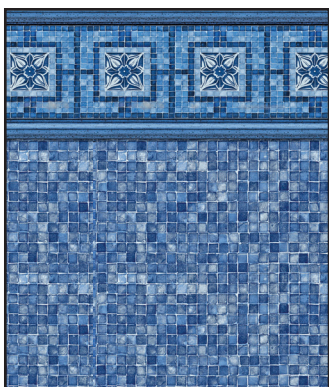
HAMPTON / SEAGLASS
27 MIL — MEDIUM



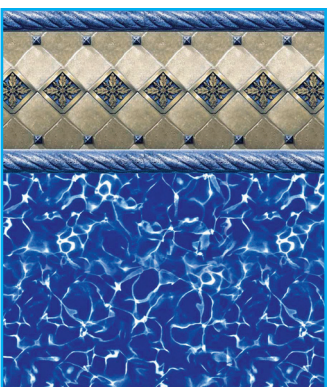
MOUNTAIN TOP / BLUE MOSAIC
27 MIL — MEDIUM



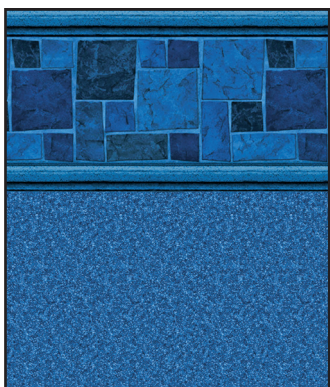
OXFORD / ELECTRIC AQUARIUS
27 MIL — DARK



VINTAGE MOSAIC / BLUE MOSAIC
27 MIL — MEDIUM



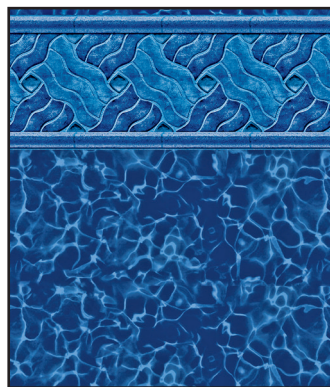
BAROLO / PRISM
27 MIL — DARK



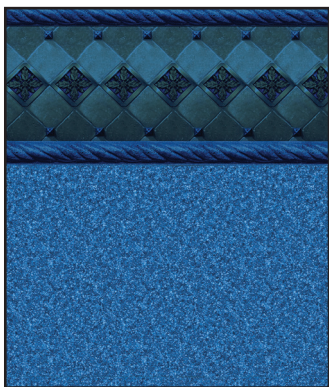
COURTSTONE BLUE / NATURAL BLUE
27 MIL — DARK



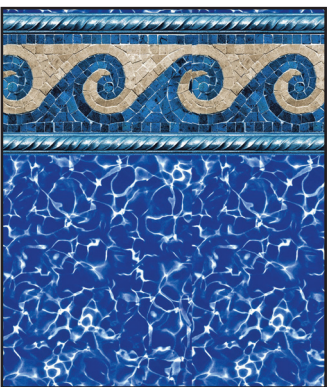
COVENTRY / PRISM
27 MIL — DARK



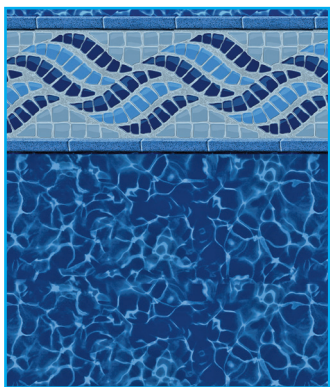
LEGENDS / DEEP BLUE FUSION
27 MIL — DARK



OCEAN BAROLO / NATURAL BLUE
27 MIL — DARK



PACIFIC TIDE / PRISM
27 MIL — DARK



SUMMERWAVE / DEEP BLUE FUSION
27 MIL — DARK

* Dolphin | Royal Seabrook liner pattern alignment may vary at the location of seams or on vinyl-over step applications.

• For tile details, see inside back cover for the liner specifications chart.
• Liners carry a 3 year full, 17 year prorated, transferable limited warranty.

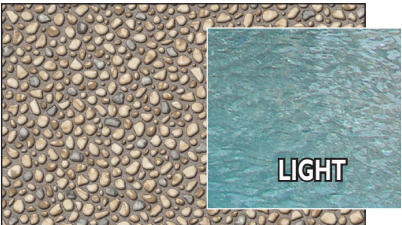
All vinyl liner graphics are for illustration purposes only. It is recommended by the manufacturer to view an actual vinyl sample before ordering your liner.
Color may vary from printed brochure. The manufacturer reserves the right to change liner selections without notice.

Floor patterns are available as “All Floor Liners” (no tile border).

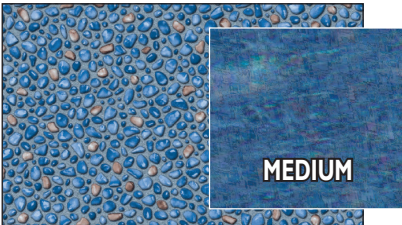
Featuring **ULTRASEAM®**
Patent Pending

Liner Technology

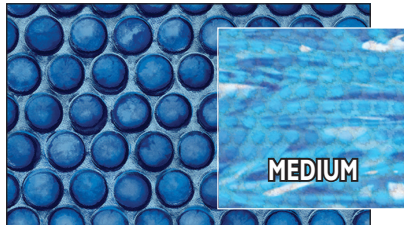
The strongest seams you'll never see! Over 500,000 installs!



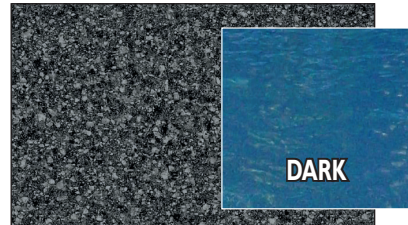
TAN SEASTONE – 27 MIL



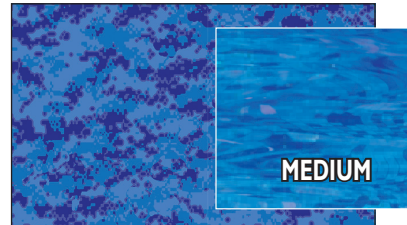
BLUE SEASTONE – 27 MIL



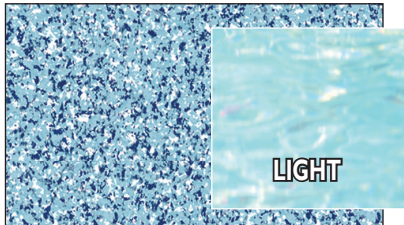
PENNY MOSAIC FLOOR – 20 MIL



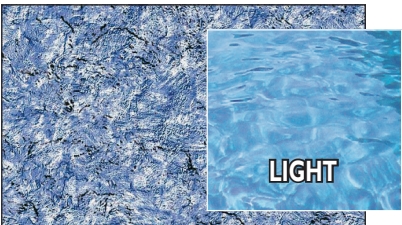
ONYX FLOOR – 27 MIL



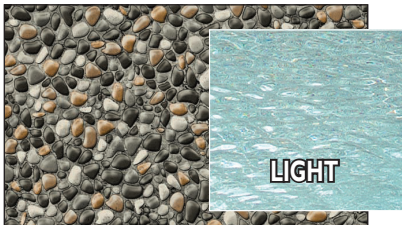
PIXEL BLUE PEARL – 27 MIL
PEARLSCAPE™ COLLECTION



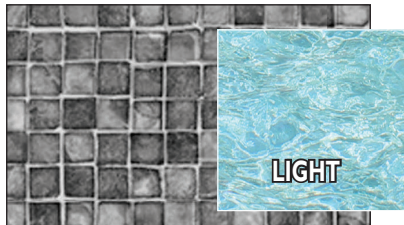
CRYSTAL – 27 MIL



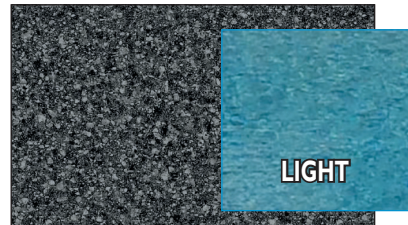
FRESCO II – 27 MIL



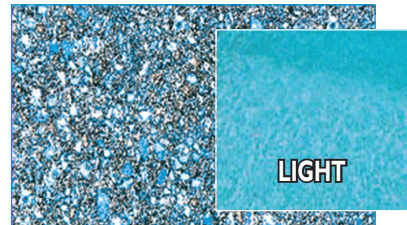
GOLD PEBBLE – 27 MIL



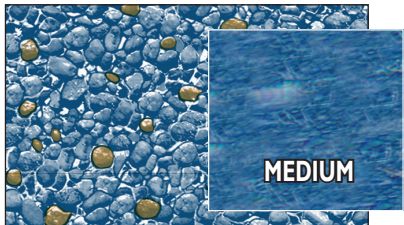
GREY MOSAIC – 20 & 27 MIL



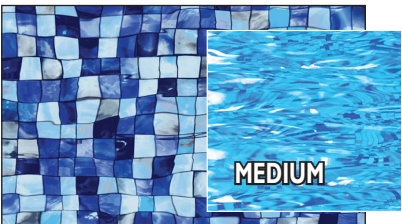
NATURAL GREY – 27 MIL



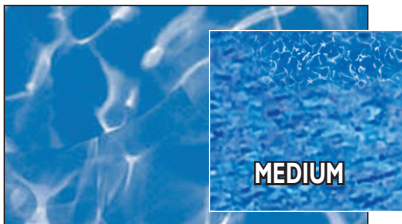
REEF – 27 MIL



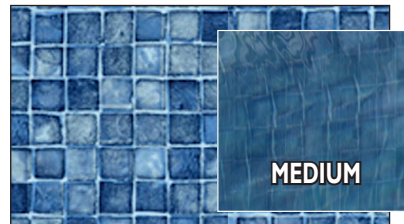
CREEKSTONE – 27 MIL



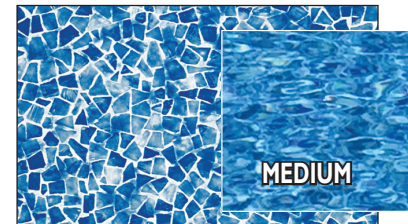
DISCO PEARL – 27 MIL
PEARLSCAPE™ COLLECTION



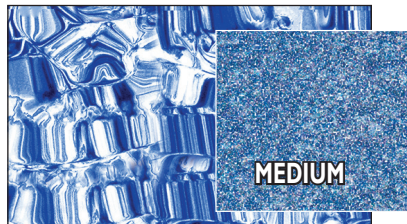
ROYAL PRISM – 27 MIL



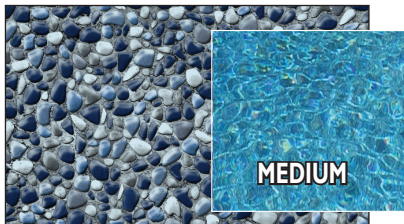
BLUE MOSAIC – 20 & 27 MIL



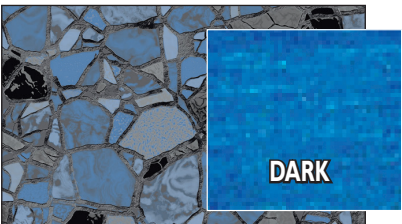
SEAGLASS – 20 & 27 MIL



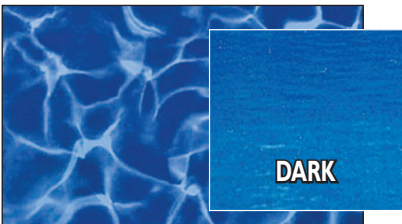
GLACIER – 20 MIL



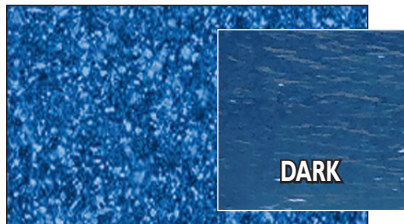
ROYAL SEABROOK* – 20 MIL



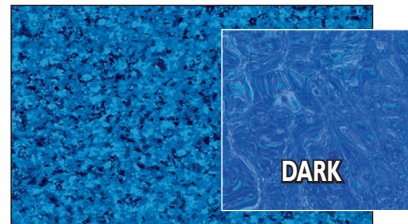
BUTTERFLY EFFECT PEARL – 27 MIL
PEARLSCAPE™ COLLECTION



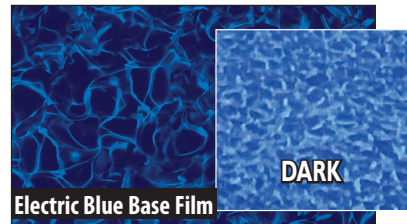
DEEP BLUE FUSION – 27 MIL



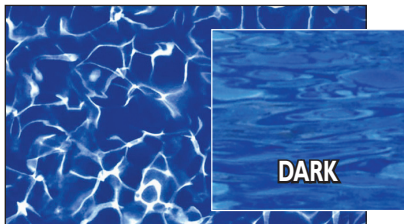
NATURAL BLUE – 27 MIL



BLUE GRANITE – 20 & 27 MIL



ELECTRIC AQUARIUS – 20 & 27 MIL



PRISM – 20 & 27 MIL

Floor patterns help determine the shade of your pool water.



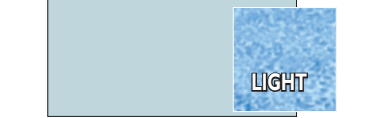
These shades represent what the pool will look like when water is added.

Samples show the actual vinyl liner swatch to the left, and the pool floor with water in the rectangle illustration.

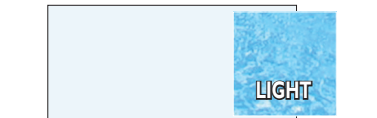
Floor patterns are available as “All Floor Liners” (no tile border).



AQUA – 27 MIL



LIGHT BLUE – 27 MIL



WHITE – 27 MIL



BLUE – 27 MIL

All 27 mil full print liners (no tile borders) and 20 mil Penny Mosaic are available with no additional full floor print up charge. All floor patterns are available in Tread-Tex for vinyl over step applications.

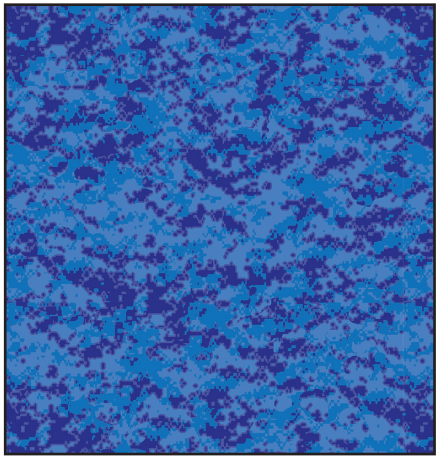
Consider Choosing a Floor Pattern as Your Full Liner

PERFORMANCE[®]
POOL PRODUCTS

You can choose to use a floor pattern without any tile at all, which will give a simple sophisticated appearance to your pool. Performance Pools offers most floor patterns as a full pool liner.



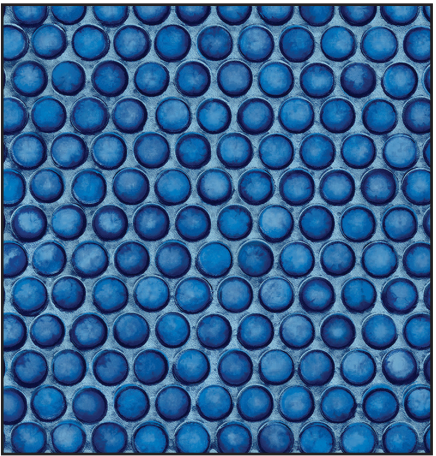
ONYX WITH VINYL OVER STEPS



PIXEL BLUE PEARL
27 MIL | MEDIUM



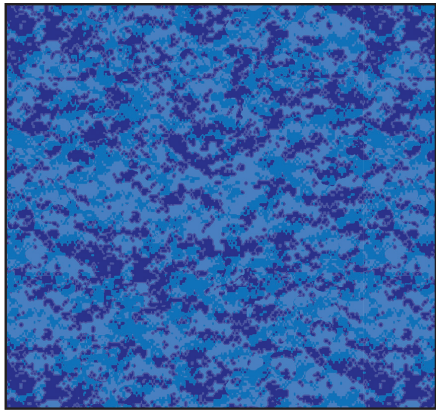
ONYX
27 MIL | DARK



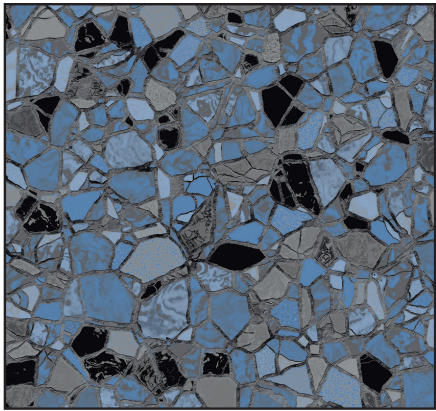
PENNY MOSAIC
20 MIL | MEDIUM

All Floor Patterns are available in Tread-Tex[™] for use on Vinyl Over Step applications!

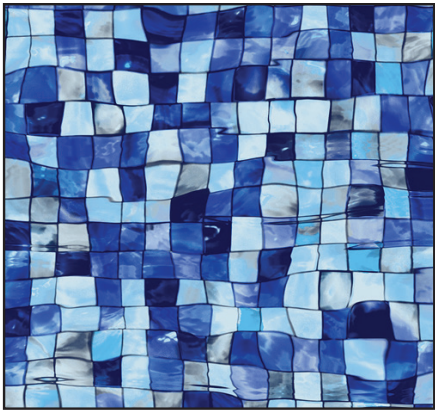
PEARLSCAPE[™] COLLECTION with Pearlescent Inks



PIXEL BLUE PEARL
27 MIL | MEDIUM



BUTTERFLY EFFECT PEARL
27 MIL | DARK



DISCO PEARL
27 MIL | MEDIUM

Latham offers an extensive array of designer patterns. The newest addition is our Pearlscape Collection.

Iridescent inks are introduced into our traditional vinyl liners and these iridescent inks create a luminous shimmer and sparkle in your pool.

The unique Pearlscape Collection liners are made from the best vinyl material available. They are treated to resist algae growth and are UV resistant for a longer life.



Featuring Vinyl Over Steps with Butterfly Effect Pearl

SuperMax/DuoMax Pattern Selections

PERFORMANCE[®]
POOL PRODUCTS



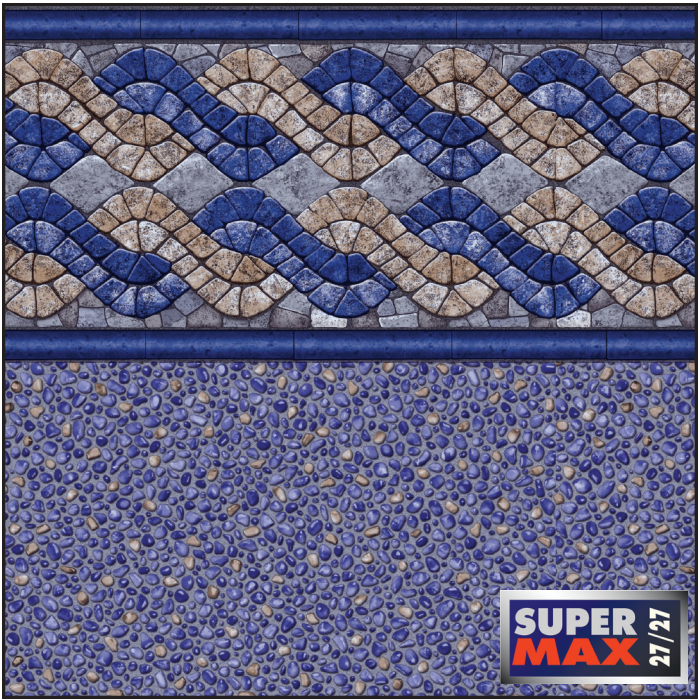
GULF COAST WITH TAN SEASTONE



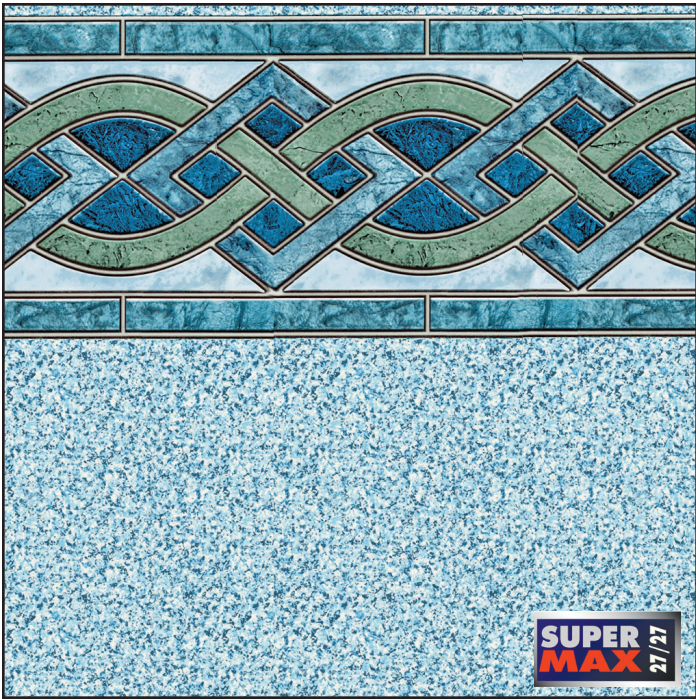
MOONSTRUCK WITH CREEKSTONE



GULF COAST / TAN SEASTONE
27/27 MIL | LIGHT



NANTUCKET / BLUE SEASTONE
27/ 27 MIL | MEDIUM



MARBLE INLAY / CRYSTAL
SUPER 27/27 MIL | LIGHT



MOONSTRUCK / CREEKSTONE
SUPER 27/27 MIL | MEDIUM



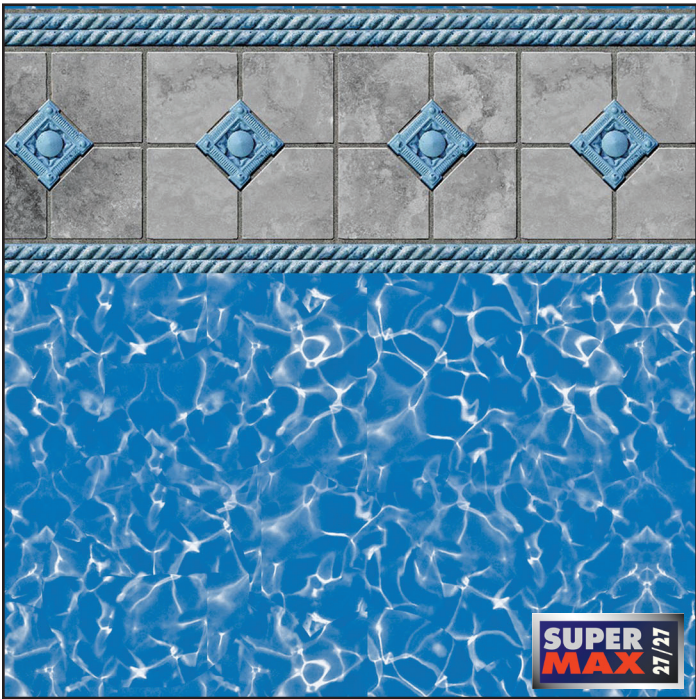
MARBLE INLAY WITH CRYSTAL



INDIGO MARBLE WITH BLUE GRANITE



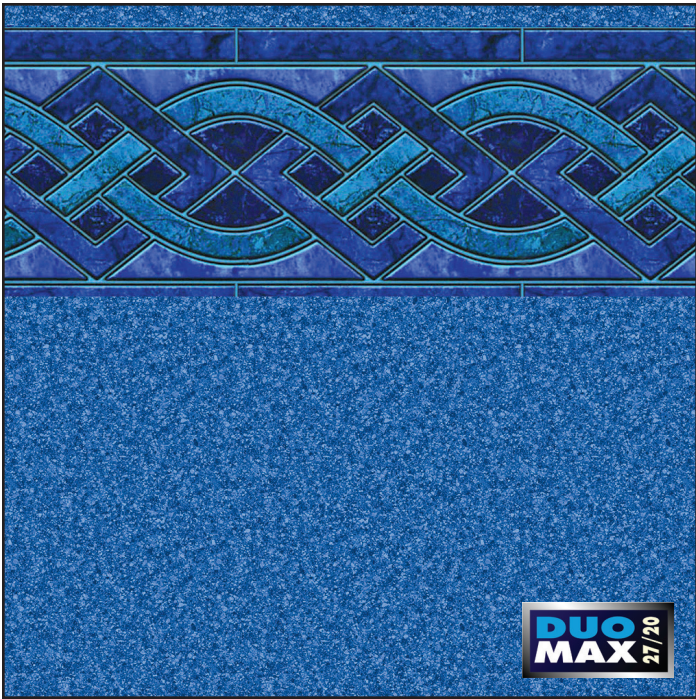
PANAMA / ROYAL PRISM
SUPER 27/27 MIL | MEDIUM



STONEBRAID / ROYAL PRISM
SUPER 27/27 MIL | MEDIUM



BALI / BLUE GRANITE
DUO 27/20 MIL | DARK



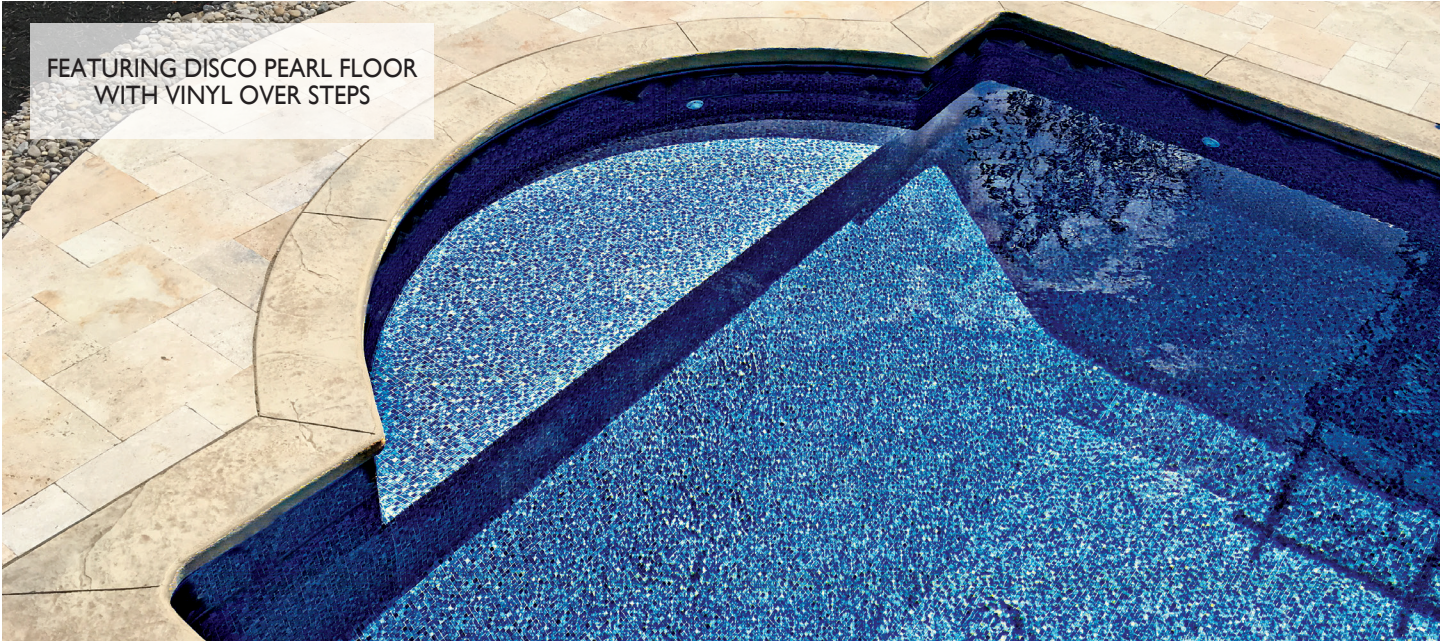
INDIGO MARBLE / BLUE GRANITE
DUO 27/20 MIL | DARK

Design Your VINYL OVER STEP

Built-In Beautiful VINYL OVER STEPS System

Look how easy it is to add PIZZAZZ to any new or existing pool. Our Vinyl Over Steps system can be used in any type of vinyl lined pool – polymer wall, steel wall, concrete, or fiberglass.

Consider our Vinyl Over Steps system for a beautiful uninterrupted liner pattern across your pool, and to build steps customized to your design specifications. Ask your dealer for details.



Latham Mesh & Solid Safety Covers

Latham mesh or solid safety covers are the strongest way to prevent children and pets from getting into your pool when you can't be there.

WE MAKE IT STRONG... TO KEEP YOUR FAMILY SAFE!

The stronger the cover, the safer the cover. We apply exclusive, patented design and manufacturing innovations to give Latham mesh and solid safety covers unmatched strength and durability.

WE MAKE IT EASY... TO INSTALL AND MAINTAIN

Unique features such as our Latham exclusive center web and extra-long installation tool make it fast and easy to install and remove the cover. A Latham cover will keep debris out of your pool and block virtually all sunlight – so you save on chemicals and enjoy cleaner water at opening time.



Our Safety Cover Difference...

Get your cover faster!

- Twice as fast as most manufacturers!

Your cover fits better!

- Largest team of order and design experts in the industry; ensures your custom cover fits perfectly
- Spring design helps your cover fit tightly against the pool deck preventing leaves and debris from blowing into your pool
- Patented RDM (Reduced Deck Mount) System ensures that your cover can attach tightly even in tight locations
- Heavy Duty Stainless Steel Coil Springs standard on all covers

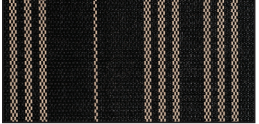








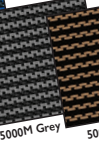


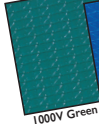
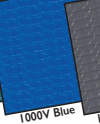

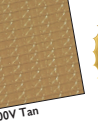

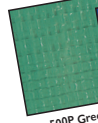
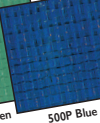

More options!

- Color options to fit any backyard
- Three mesh and two solid options
- Standard mesh drain panel or optional cover pump

Stronger fabric and seams!

- Special UV and mildew resistant formulas
- Double-folded seams – The strongest seams on the planet
- Reinforced corners to prevent ripping under stress
- Durable Chafing strips – Prevents rubbing and premature cover wear

Best warranties in the industry!

9000MX™ Max Shade Mesh* 25 Yr Warranty	 9000MX Exclusive Design	
7000MS™ High Shade Mesh* 20 Yr Warranty	 7000MS Green	 7000MS Blue
	 7000MS Grey	 7000MS Tan
		
5000M™ Standard Mesh 15 Yr Warranty	 5000M Green	 5000M Blue
	 5000M Grey	 5000M Tan
		
1000V™ Heavy Duty Solid 15 Yr Warranty	 1000V Green	 1000V Blue
	 1000V Grey	 1000V Tan
		
500P™ Lite Duty Solid 12 Yr Warranty	 500P Green	 500P Blue
		

*7000MS Mesh U.S. Patent No. 6,886,187 – 98% Shade

Be Smart, Play it Safe

IMPORTANT:A number of very important items that are essential for the safe use of your pool may not be visible in many of the photographs, either because of perspective or camera angle, or because they were removed for photographic purposes. These items include:

- 1. Safety ropes, which should remain in place at all times
- 2. “No Diving” signs are provided by the manufacturer and should be installed in accordance with instructions included on the coping or liner, where they are clearly visible
- 3. An area sign is provided by the manufacturer and must be permanently and conspicuously affixed in the pool area where all users can see it
- 4. Necessary means of exit and entry into the pool
- 5. Fencing with a self-latching gate, and other barriers that can assist in preventing unsupervised access to the pool by children
- 6. Approved drain covers and other devices to protect against suction entrapment.
- 7. Minimum required inlets and returns to ensure proper water circulation.
- 8. Appropriate in pool lighting if the pool will be used after dark.

All of these devices should be installed in accordance with manufacturer’s instructions,ANSI/NSPI or ANSI/PHTA or ANSI/APSP/ICC standards, as well as state and local statutes and codes.

Diving boards and slides require minimum depths and distances and must only be installed and used in strict compliance with the equipment manufacturer’s specifications and ANSI/NSPI or ANSI/PHTA or ANSI/APSP/ICC standards. If the pool is labeled by us as NON-DIVING, then diving equipment may not be installed and any such equipment must be removed before the pool is used.

If the pool is labeled by us as NON-DIVING, then diving equipment may not be installed and any such equipment must be removed before the pool is used.

Smart pool owners always think safety first.They take specific steps to ensure that their family, friends and guests are knowledgeable about the safe and sensible use of their pool.They also:

- ensure that their pool is never used unless there is adequate supervision

- ensure that their pool is kept in good repair and is not used when there is a missing or broken drain cover or other component
- ensure thatALL CHILDREN using their pool are supervised constantly
- that anyone under the influence of alcohol, drugs or stimulants that would impair their abilities or judgement does not use the pool
- ensure that their pool is protected by appropriate barriers to unsupervised entry including fencing with self-latching gates, covers, alarms, etc.

To assist you, a number of very important items of safety literature are included with each pool.We must insist that you read each item carefully and follow the instructions.These are:

- Pool Owners Safety Handbook
- “Notice” Card
- PHTA “Sensible Way” Book
- Vinyl Swimming Pool Liner–Warranty
- “Children Aren’t Waterproof” Book
- “No Diving” Labels
- Area Sign

Make sure your builder supplies you with all of the safety information that accompanies your pool and installs the enclosed warning stickers and area sign where they can be clearly visible to all who use the pool.

NOTICE:The manufacturer stands behind every product they produced pursuant to those representations which are stated in the written warranties.Your dealer/builder/contractor is an independent business person and not an agent or employee of the manufacturer.The manufacturer cannot and does not accept any responsibility for any representations, statements or contracts made by any dealer/builder/contractor.

Performance Pool Products™ is a trademark of Latham Pool Products, Inc.

The specifications in this brochure were believed to be true at the time of printing. However, specifications, standard equipment and options are subject to change without notice.

Pattern Name	Floor	Mil Weight	Tile Height	Shade
Bali	Blue Granite	DUO 27/20	9"	Dark
Barolo	Prism	20 & 27	10"	Dark
Cancun	Blue Granite	20	10-1/2"	Dark
Capri	Fresco II	27	9"	Light
Colbalt Lake	Grey Mosaic	20 & 27	10"	Light
Courtstone	Natural Grey	27	11"	Light
Courtstone Blue	Natural Blue	27	11-1/2"	Dark
Coventry	Prism	20 & 27	10"	Dark
Dolphin	Royal Seabrook	20	8"	Med
Gulf Coast	Tan Seastone	SUPER 27/27	10-1/2"	Light
Hampton	Seaglass	20 & 27	9-1/2"	Med
Indigo Marble	Blue Granite	DUO 27/20	9-1/2"	Dark
Legends	Deep Blue Fusion	27	10"	Dark
Marble Inlay	Crystal	SUPER 27/27	9-1/2"	Light
Moonstruck	Creekstone	SUPER 27/27	9-1/2"	Med
Mountain Top	Blue Mosaic	20 & 27	9-1/2"	Med
Nantucket	Blue Seastone	SUPER 27/27	11"	Med
Ocean Barolo	Natural Blue	27	10-1/2"	Dark
Oxford	Electric Aquarius Electric Blue Base Film	20 & 27	7-3/4"	Dark
Pacific Tide	Prism	20 & 27	9-3/4"	Dark
Panama	Royal Prism	SUPER 27/27	10-1/2"	Med
Seaside	Glacier	20	8-1/4"	Med
Stonebraid	Royal Prism	SUPER 27/27	9"	Med
Summerwave	Deep Blue Fusion	27	9-3/4"	Dark
Tan Sierra	Gold Pebble	27	15"	Light
Vintage Mosaic	Blue Mosaic	20 & 27	9"	Med

	Pixel Blue Pearl Pearlscape Collection®	27	Full Floor	Medium
	Onyx	27	Full Floor	Dark
	Penny Mosaic	20	Full Floor	Medium

1. All vinyl liner graphics are for illustration purposes only. It is recommended by the manufacturer to view an actual vinyl sample before ordering your liner.
2. Color may vary from printed brochure.The manufacturer reserves the right to change liner selections without notice.
3. On the Dolphin | Royal Seabrook liner, pattern alignment may vary at the location of seams or on vinyl-over step applications.



PERFORMANCE[®] POOL PRODUCTS

Featuring

ULTRA[®]SEAM
Patent Pending

Liner Technology

The strongest seams you'll never see! Over 500,000 installs!

2020 Vinyl Inground Liners



CAPRI / FRESCO II

The specifications in this brochure were believed to be true at the time of printing. However, specifications, standard equipment and options are subject to change without notice.

www.PerformancePoolProducts.com

latham

787 Watervliet Shaker Road • Latham, New York 12110
800-833-3800 • lathampool.com

#BuildLatham



© Latham Pool Products, Inc. . All rights reserved 2019.

AD4749.20 12/19 HMG